

Annealed limit for a diffusive disordered mean-field model with random jumps

Xavier Erny

École polytechnique (CMAP)

Séminaire de probabilités et statistiques de Nice
31 janvier 2023

- 1 Mathematical background
 - Point processes
 - Thinning
- 2 Model
 - Neural networks model
 - Definitions of the systems
 - Heuristics
- 3 Convergence
 - Result
 - Finite-dimensional convergence
 - Tightness
- 4 Prospect ?

Point process : definitions

Point process (or counting process) Z :

- a random countable set of \mathbb{R}_+ : $Z = \{T_i : i \in \mathbb{N}\}$
- a random point measure on \mathbb{R}_+ : $Z = \sum_{i \in \mathbb{N}} \delta_{T_i}$

Point process : definitions

Point process (or counting process) Z :

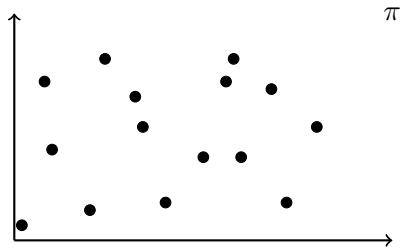
- a random countable set of \mathbb{R}_+ : $Z = \{T_i : i \in \mathbb{N}\}$
- a random point measure on \mathbb{R}_+ : $Z = \sum_{i \in \mathbb{N}} \delta_{T_i}$

A process λ is the **stochastic intensity** of Z if :

$$\forall 0 \leq a < b, \mathbb{E} [Z([a, b]) | \mathcal{F}_a] = \mathbb{E} \left[\int_a^b \lambda_t dt \middle| \mathcal{F}_a \right]$$

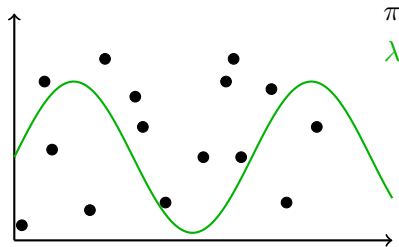
Thinning

π Poisson measure on $\mathbb{R}_+ \times \mathbb{R}_+$ with intensity $dt \cdot dz$



Thinning

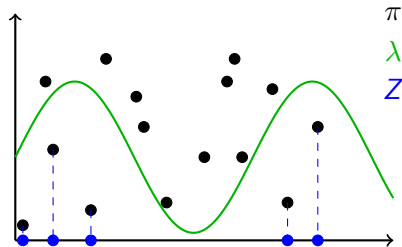
π Poisson measure on $\mathbb{R}_+ \times \mathbb{R}_+$ with intensity $dt.dz$
 λ predictable and positive process



Thinning

π Poisson measure on $\mathbb{R}_+ \times \mathbb{R}_+$ with intensity $dt.dz$
 λ predictable and positive process

$$Z(A) = \int_{A \times \mathbb{R}_+} \mathbb{1}_{\{z \leq \lambda(t)\}} d\pi(t, z)$$



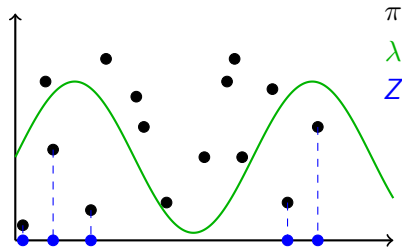
Thinning

π Poisson measure on $\mathbb{R}_+ \times \mathbb{R}_+$ with intensity $dt.dz$

λ predictable and positive process

$$Z(A) = \int_{A \times \mathbb{R}_+} \mathbb{1}_{\{z \leq \lambda(t)\}} d\pi(t, z)$$

Then : λ is the stochastic intensity of Z



Modeling in neuroscience

Neural activity = Set of spike times

Modeling in neuroscience

Neural activity = Set of spike times
= Point process

Modeling in neuroscience

Neural activity = Set of spike times
= Point process

Spike rate depends on the potential of the neuron

Modeling in neuroscience

Neural activity = Set of spike times
= Point process

Spike rate depends on the potential of the neuron

Each spike modifies the potential of the neurons

Modeling in neuroscience

Neural activity = Set of spike times
 = Point process

Spike rate depends on the potential of the neuron

Each spike modifies the potential of the neurons

Network of N neurons :

- $Z_t^{N,i}$ = number of spikes of neuron i emitted in $[0, t]$
 = point process with intensity $f(X_{t-}^{N,i})$
- $X^{N,i}$ = potential of neuron i

Modeling in neuroscience

Neural activity = Set of spike times
 = Point process

Spike rate depends on the potential of the neuron

Each spike modifies the potential of the neurons

Network of N neurons :

- $Z_t^{N,i}$ = number of spikes of neuron i emitted in $[0, t]$
 = point process with intensity $f(X_t^{N,i})$
- $X^{N,i}$ = potential of neuron i

Here, $X^{N,i}$ solves an SDE directed by $(Z^{N,j})_{1 \leq j \leq N}$

N -neurons network model

$$dX_t^{N,i} = -\alpha X_t^{N,i} dt + \frac{1}{N^\beta} \sum_{j=1}^N \int u^{ji}(t) \mathbb{1}_{\{z \leq f(X_{t-}^{N,j})\}} d\pi^j(t, z)$$

with :

- $\pi^j =$ PRM with intensity $dt \cdot dz$
- $\beta = 1$ or $1/2$
- $u^{ji}(t) =$ random variable (or deterministic)

N -neurons network model

$$dX_t^{N,i} = -\alpha X_t^{N,i} dt + \frac{1}{N^\beta} \sum_{j=1}^N \int u^{ji}(t) \mathbb{1}_{\{z \leq f(X_{t-}^{N,j})\}} d\pi^j(t, z)$$

with :

- $\pi^j =$ PRM with intensity $dt \cdot dz$
- $\beta = 1$ or $1/2$
- $u^{ji}(t) =$ random variable (or deterministic)

Dynamic of $X^{N,i}$:

N -neurons network model

$$dX_t^{N,i} = -\alpha X_t^{N,i} dt + \frac{1}{N^\beta} \sum_{j=1}^N \int u^{ji}(t) \mathbb{1}_{\{z \leq f(X_{t-}^{N,j})\}} d\pi^j(t, z)$$

with :

- $\pi^j =$ PRM with intensity $dt \cdot dz$
- $\beta = 1$ or $1/2$
- $u^{ji}(t) =$ random variable (or deterministic)

Dynamic of $X^{N,i}$:

- $X_t^{N,i} = X_s^{N,i} e^{-\alpha(t-s)}$ if the system does not jump in $[s, t[$
 $\rightarrow \alpha =$ leakage rate

N -neurons network model

$$dX_t^{N,i} = -\alpha X_t^{N,i} dt + \frac{1}{N^\beta} \sum_{j=1}^N \int u^{ji}(t) \mathbb{1}_{\{z \leq f(X_{t-}^{N,j})\}} d\pi^j(t, z)$$

with :

- $\pi^j =$ PRM with intensity $dt \cdot dz$
- $\beta = 1$ or $1/2$
- $u^{ji}(t) =$ random variable (or deterministic)

Dynamic of $X^{N,i}$:

- $X_t^{N,i} = X_s^{N,i} e^{-\alpha(t-s)}$ if the system does not jump in $[s, t[$
 $\rightarrow \alpha =$ leakage rate
- $X_t^{N,i} = X_{t-}^{N,i} + \frac{u^{ji}(t)}{N^\beta}$ if a neuron j emits a spike at t
 $\rightarrow u^{ji}(t)/N^\beta =$ synaptic weight

Mean field limit

$$dX_t^{N,i} = b(X_t^{N,i})dt + \frac{1}{N^\beta} \sum_{j=1}^N \int_0^\infty w^{ji}(t) \mathbb{1}_{\{z \leq f(X_{t-}^{N,j})\}} d\pi^j(t, z)$$

π^j iid Poisson measures with intensity $dt \cdot dz$

Mean field limit

$$dX_t^{N,i} = b(X_t^{N,i})dt + \frac{1}{N^\beta} \sum_{j=1}^N \int_0^\infty u^{ji}(t) \mathbb{1}_{\{z \leq f(X_{t-}^{N,j})\}} d\pi^j(t, z)$$

π^j iid Poisson measures with intensity $dt \cdot dz$

Scaling of the sum :

Mean field limit

$$dX_t^{N,i} = b(X_t^{N,i})dt + \frac{1}{N^\beta} \sum_{j=1}^N \int_0^\infty u^{ji}(t) \mathbb{1}_{\{z \leq f(X_{t-}^{N,j})\}} d\pi^j(t, z)$$

π^j iid Poisson measures with intensity $dt \cdot dz$

Scaling of the sum :

- linear scaling $\beta = 1$ (LLN) :
[\[Delattre et al. \(2016\)\]](#) (Hawkes process, $u^{ji}(t) = 1$),
[\[Chevallier et al. \(2019\)\]](#) and [\[Agathe-Nerine \(2022\)\]](#)
 ($u^{ji}(t) = w(v_j, v_i)$ random)

Mean field limit

$$dX_t^{N,i} = b(X_t^{N,i})dt + \frac{1}{N^\beta} \sum_{j=1}^N \int_0^\infty u^{ji}(t) \mathbb{1}_{\{z \leq f(X_{t-}^{N,j})\}} d\pi^j(t, z)$$

π^j iid Poisson measures with intensity $dt \cdot dz$

Scaling of the sum :

- linear scaling $\beta = 1$ (LLN) :
[Delattre et al. (2016)] (Hawkes process, $u^{ji}(t) = 1$),
[Chevallier et al. (2019)] and [Agathe-Nerine (2022)]
($u^{ji}(t) = w(v_j, v_i)$ random)
- diffusive scaling $\beta = 1/2$ (CLT)

Advantage of diffusive model

- [Barral, Reyes (2016)]
synaptic strength $\approx N^{-0.59}$: experiment culture preparation

Advantage of diffusive model

- [Barral, Reyes (2016)]
synaptic strength $\approx N^{-0.59}$: experiment culture preparation
- [Shu, Hasenstaub, McCormick (2003)], [Haider et al. (2006)]
centered synaptic weight : "balanced networks"

Advantage of diffusive model

- [Barral, Reyes (2016)]
synaptic strength $\approx N^{-0.59}$: experiment culture preparation
- [Shu, Hasenstaub, McCormick (2003)], [Haider et al. (2006)]
centered synaptic weight : "balanced networks"
- - scaling $N^{-1} \implies$ limit ODE
 - scaling $N^{-1/2} \implies$ limit SDE (model with noise) \implies various noises (the other neurons, the ion channels,...)

Diffusive scaling

- **Marked point processes**

- **Random environment**

Diffusive scaling

- **Marked point processes** π^j PRM $\mathbb{R}_+^2 \times \mathbb{R}$ intensity $dtdzdv(u)$

$$dX_t^{N,i} = b(X_t^{N,i})dt + N^{-1/2} \sum_{j=1}^N \int_0^\infty u \mathbb{1}_{\{z \leq f(X_{t-}^{N,j})\}} d\pi^j(t, z, u)$$

- **Random environment**

Diffusive scaling

- **Marked point processes** π^j PRM $\mathbb{R}_+^2 \times \mathbb{R}$ intensity $dtdzdv(u)$

$$dX_t^{N,i} = b(X_t^{N,i})dt + N^{-1/2} \sum_{j=1}^N \int_0^\infty u \mathbb{1}_{\{z \leq f(X_{t-}^{N,j})\}} d\pi^j(t, z, u)$$

References : 3 × [E., Löcherbach, Loukianova (2022)]

Property : semimartingale and Markov structure

- **Random environment**

Diffusive scaling

- Marked point processes π^j PRM $\mathbb{R}_+^2 \times \mathbb{R}$ intensity $dtdzdv(u)$

$$dX_t^{N,i} = b(X_t^{N,i})dt + N^{-1/2} \sum_{j=1}^N \int_0^\infty u \mathbb{1}_{\{z \leq f(X_{t-}^{N,j})\}} d\pi^j(t, z, u)$$

References : 3 × [E., Löcherbach, Loukianova (2022)]

Property : semimartingale and Markov structure

- Random environment U_{ji} iid centered

$$dX_t^{N,i} = b(X_t^{N,i})dt + N^{-1/2} \sum_{j=1}^N U_{ji} \int_0^\infty \mathbb{1}_{\{z \leq f(X_{t-}^{N,j})\}} d\pi^j(t, z)$$

Diffusive scaling

- Marked point processes** π^j PRM $\mathbb{R}_+^2 \times \mathbb{R}$ intensity $dtdzdv(u)$

$$dX_t^{N,i} = b(X_t^{N,i})dt + N^{-1/2} \sum_{j=1}^N \int_0^\infty u \mathbb{1}_{\{z \leq f(X_{t-}^{N,j})\}} d\pi^j(t, z, u)$$

References : 3 × [E., Löcherbach, Loukianova (2022)]

Property : semimartingale and Markov structure

- Random environment** U_{ji} iid centered

$$dX_t^{N,i} = b(X_t^{N,i})dt + N^{-1/2} \sum_{j=1}^N U_{ji} \int_0^\infty \mathbb{1}_{\{z \leq f(X_{t-}^{N,j})\}} d\pi^j(t, z)$$

Reference : ...

Property : conditional semimartingale and Markov structure

Diffusive scaling

- Marked point processes** π^j PRM $\mathbb{R}_+^2 \times \mathbb{R}$ intensity $dtdzdv(u)$

$$dX_t^{N,i} = b(X_t^{N,i})dt + N^{-1/2} \sum_{j=1}^N \int_0^\infty u \mathbb{1}_{\{z \leq f(X_{t-}^{N,j})\}} d\pi^j(t, z, u)$$

References : 3 × [E., Löcherbach, Loukianova (2022)]

Property : semimartingale and Markov structure

- Random environment** U_{ji} iid centered

$$dX_t^{N,i} = b(X_t^{N,i})dt + N^{-1/2} \sum_{j=1}^N U_{ji} \int_0^\infty \mathbb{1}_{\{z \leq f(X_{t-}^{N,j})\}} d\pi^j(t, z)$$

Reference : ...

Property : conditional semimartingale and Markov structure

Marked model inconsistency :

roles of synapses can change at every spike

Diffusive scaling, random environment, dimension 1

N -particle system U_j iid centered

$$dX_t^{N,i} = b(X_t^{N,i})dt + N^{-1/2} \sum_{j=1}^N U_j \int_0^\infty \mathbb{1}_{\{z \leq f(X_{t-}^{N,j})\}} d\pi^j(t, z)$$

Diffusive scaling, random environment, dimension 1

N -particle system U_j iid centered

$$dX_t^{N,i} = b(X_t^{N,i})dt + N^{-1/2} \sum_{j=1}^N U_j \int_0^\infty \mathbb{1}_{\{z \leq f(X_{t-}^{N,j})\}} d\pi^j(t, z)$$

Diffusive scaling, random environment, dimension 1

N -particle system U_j iid centered

$$dX_t^N = b(X_t^N)dt + N^{-1/2} \sum_{j=1}^N U_j \int_0^\infty \mathbb{1}_{\{z \leq f(X_{t-}^N)\}} d\pi^j(t, z)$$

Diffusive scaling, random environment, dimension 1

N -particle system U_j iid centered

$$dX_t^N = b(X_t^N)dt + N^{-1/2} \sum_{j=1}^N U_j \int_0^\infty \mathbb{1}_{\{z \leq f(X_{t-}^N)\}} d\pi^j(t, z)$$

Reference : [Pfaffelhuber, Rotter, Stiefel (2022)] 2 differences :

- X^N Hawkes process \Rightarrow not gentle process
- $\mathcal{L}(U_1) = 1/2\delta_1 + 1/2\delta_{-1} \Rightarrow$ gentle distribution

Diffusive scaling, random environment, dimension 1

N -particle system U_j iid centered

$$dX_t^N = b(X_t^N)dt + N^{-1/2} \sum_{j=1}^N U_j \int_0^\infty \mathbb{1}_{\{z \leq f(X_{t-}^N)\}} d\pi^j(t, z)$$

Reference : [Pfaffelhuber, Rotter, Stiefel (2022)] 2 differences :

- X^N Hawkes process \Rightarrow not gentle process
- $\mathcal{L}(U_1) = 1/2\delta_1 + 1/2\delta_{-1} \Rightarrow$ gentle distribution

Our assumption : U_1 centered and

$$\mathbb{E} \left[e^{\alpha|U_1|} \right] < \infty \text{ for some } \alpha > 0; \quad \sigma^2 := \mathbb{E} [U_1^2]$$

Diffusive scaling, random environment, dimension 1

N -particle system U_j iid centered

$$dX_t^N = b(X_t^N)dt + N^{-1/2} \sum_{j=1}^N U_j \int_0^\infty \mathbb{1}_{\{z \leq f(X_{t-}^N)\}} d\pi^j(t, z)$$

Reference : [Pfaffelhuber, Rotter, Stiefel (2022)] 2 differences :

- X^N Hawkes process \Rightarrow not gentle process
- $\mathcal{L}(U_1) = 1/2\delta_1 + 1/2\delta_{-1} \Rightarrow$ gentle distribution

Our assumption : U_1 centered and

$$\mathbb{E} \left[e^{\alpha|U_1|} \right] < \infty \text{ for some } \alpha > 0; \quad \sigma^2 := \mathbb{E} [U_1^2]$$

Limit system $W \sim \mathcal{N}(0, \sigma^2)$

$$d\bar{X}_t = b(\bar{X}_t)dt + Wf(\bar{X}_t)dt + \sigma\sqrt{f(\bar{X}_t)}dB_t$$

Heuristics for the limit system

N -particle system

$$dX_t^N = b(X_t^N)dt + N^{-1/2} \sum_{j=1}^N U_j \int_0^\infty \mathbb{1}_{\{z \leq f(X_{t-}^N)\}} d\pi^j(t, z)$$

Limit system

$$d\bar{X}_t = b(\bar{X}_t)dt + Wf(\bar{X}_t)dt + \sigma \sqrt{f(\bar{X}_t)}dB_t$$

Heuristics for the limit system

N -particle system

$$dX_t^N = b(X_t^N)dt + N^{-1/2} \sum_{j=1}^N U_j \int_0^\infty \mathbb{1}_{\{z \leq f(X_{t-}^N)\}} d\pi^j(t, z)$$

Limit system

$$d\bar{X}_t = b(\bar{X}_t)dt + Wf(\bar{X}_t)dt + \sigma \sqrt{f(\bar{X}_t)}dB_t$$

Heuristics for the limit system

N -particle system $\tilde{\pi}^j(dt, dz) := \pi^j(dt, dz) - dt dz$

$$dX_t^N = b(X_t^N)dt + N^{-1/2} \sum_{j=1}^N U_j \int_0^\infty \mathbb{1}_{\{z \leq f(X_{t-}^N)\}} d\tilde{\pi}^j(t, z) \\ + \left(N^{-1/2} \sum_{j=1}^N U_j \right) f(X_t^N)dt$$

Limit system

$$d\bar{X}_t = b(\bar{X}_t)dt + Wf(\bar{X}_t)dt + \sigma \sqrt{f(\bar{X}_t)}dB_t$$

Heuristics for the limit system

N -particle system $\tilde{\pi}^j(dt, dz) := \pi^j(dt, dz) - dt dz$

$$dX_t^N = b(X_t^N)dt + N^{-1/2} \sum_{j=1}^N U_j \int_0^\infty \mathbb{1}_{\{z \leq f(X_{t-}^N)\}} d\tilde{\pi}^j(t, z) \\ + \left(N^{-1/2} \sum_{j=1}^N U_j \right) f(X_t^N)dt$$

Limit system

$$d\bar{X}_t = b(\bar{X}_t)dt + Wf(\bar{X}_t)dt + \sigma \sqrt{f(\bar{X}_t)}dB_t$$

CLT coupling from KMT result

Proposition

Let U_j ($j \geq 1$) iid centered, for some $\alpha > 0$,

$$\mathbb{E} \left[e^{\alpha |U_1|} \right] < \infty \text{ and } \sigma^2 := \mathbb{E} [U_1^2]$$

CLT coupling from KMT result

Proposition

Let U_j ($j \geq 1$) iid centered, for some $\alpha > 0$,

$$\mathbb{E} \left[e^{\alpha |U_1|} \right] < \infty \text{ and } \sigma^2 := \mathbb{E} [U_1^2]$$

Then there exist $W^{[N]}$ i.d. $\sim \mathcal{N}(0, \sigma^2)$ and K such that :

$$\left| \frac{1}{\sqrt{N}} \sum_{j=1}^N U_j - W^{[N]} \right| \leq K \frac{\ln N}{\sqrt{N}} \text{ and } \mathbb{E} \left[e^{\gamma K} \right] < \infty \text{ for some } \gamma > 0$$

Sketch of proof of CLT coupling

[Komlós, Major, Tusnády (1976)] :

there exist BM β and constants Γ, Λ, λ , such that $\forall N \geq 2, x > 0$,

$$\mathbb{P} \left(\max_{k \leq N} \left| \sum_{j=1}^k U_j - \sigma \beta_k \right| > \Gamma \ln N + x \right) \leq \Lambda e^{-\lambda x}$$

Sketch of proof of CLT coupling

[Komlós, Major, Tusnády (1976)] :

there exist BM β and constants Γ, Λ, λ , such that $\forall N \geq 2, x > 0$,

$$\mathbb{P} \left(\max_{k \leq N} \left| \sum_{j=1}^k U_j - \sigma \beta_k \right| > \Gamma \ln N + x \right) \leq \Lambda e^{-\lambda x}$$

$$\rightsquigarrow \max_{k \leq N} \left| \sum_{j=1}^k U_j - \sigma \beta_k \right| = O(\ln N) \leq K \ln N$$

Sketch of proof of CLT coupling

[Komlós, Major, Tusnády (1976)] :

there exist BM β and constants Γ, Λ, λ , such that $\forall N \geq 2, x > 0$,

$$\mathbb{P} \left(\max_{k \leq N} \left| \sum_{j=1}^k U_j - \sigma \beta_k \right| > \Gamma \ln N + x \right) \leq \Lambda e^{-\lambda x}$$

$$\rightsquigarrow \max_{k \leq N} \left| \sum_{j=1}^k U_j - \sigma \beta_k \right| = O(\ln N) \leq K \ln N$$

$$\rightsquigarrow \left| \frac{1}{\sqrt{N}} \sum_{j=1}^N U_j - \sigma \frac{\beta_N}{\sqrt{N}} \right| \leq K \frac{\ln N}{\sqrt{N}}$$

Sketch of proof of CLT coupling

[Komlós, Major, Tusnády (1976)] :

there exist BM β and constants Γ, Λ, λ , such that $\forall N \geq 2, x > 0$,

$$\mathbb{P} \left(\max_{k \leq N} \left| \sum_{j=1}^k U_j - \sigma \beta_k \right| > \Gamma \ln N + x \right) \leq \Lambda e^{-\lambda x}$$

$$\rightsquigarrow \max_{k \leq N} \left| \sum_{j=1}^k U_j - \sigma \beta_k \right| = O(\ln N) \leq K \ln N$$

$$\rightsquigarrow \left| \frac{1}{\sqrt{N}} \sum_{j=1}^N U_j - \sigma \frac{\beta_N}{\sqrt{N}} \right| \leq K \frac{\ln N}{\sqrt{N}}$$

Sketch of proof of CLT coupling

[Komlós, Major, Tusnády (1976)] :

there exist BM β and constants Γ, Λ, λ , such that $\forall N \geq 2, x > 0$,

$$\mathbb{P} \left(\max_{k \leq N} \left| \sum_{j=1}^k U_j - \sigma \beta_k \right| > \Gamma \ln N + x \right) \leq \Lambda e^{-\lambda x}$$

$$\rightsquigarrow \max_{k \leq N} \left| \sum_{j=1}^k U_j - \sigma \beta_k \right| = O(\ln N) \leq K \ln N$$

$$\rightsquigarrow \left| \frac{1}{\sqrt{N}} \sum_{j=1}^N U_j - W^{[M]} \right| \leq K \frac{\ln N}{\sqrt{N}}$$

with $W^{[M]} := \sigma \beta_N / \sqrt{N} \sim \mathcal{N}(0, \sigma^2)$

Conditional stochastic calculus

$$dX_t^N = b(X_t^N)dt + N^{-1/2} \sum_{j=1}^N U_j \int_0^\infty \mathbb{1}_{\{z \leq f(X_{t-}^N)\}} d\pi^j(t, z)$$

Control of moment of $\sup |X_t^N|^2$:

Conditional stochastic calculus

$$dX_t^N = b(X_t^N)dt + N^{-1/2} \sum_{j=1}^N U_j \int_0^\infty \mathbb{1}_{\{z \leq f(X_{t-}^N)\}} d\pi^j(t, z)$$

Control of moment of $\sup |X_t^N|^2$:

Conditional stochastic calculus

$$dX_t^N = b(X_t^N)dt + N^{-1/2} \sum_{j=1}^N U_j \int_0^\infty \mathbb{1}_{\{z \leq f(X_{t-}^N)\}} d\tilde{\pi}^j(t, z) \\ + \left(N^{-1/2} \sum_{j=1}^N U_j \right) f(X_t^N)dt$$

Control of moment of $\sup |X_t^N|^2$:

Conditional stochastic calculus

$$dX_t^N = b(X_t^N)dt + N^{-1/2} \sum_{j=1}^N U_j \int_0^\infty \mathbb{1}_{\{z \leq f(X_{t-}^N)\}} d\tilde{\pi}^j(t, z) \\ + \left(N^{-1/2} \sum_{j=1}^N U_j \right) f(X_t^N)dt$$

Control of moment of $\sup |X_t^N|^2$:

Conditional stochastic calculus

$$dX_t^N = b(X_t^N)dt + N^{-1/2} \sum_{j=1}^N U_j \int_0^\infty \mathbb{1}_{\{z \leq f(X_{t-}^N)\}} d\tilde{\pi}^j(t, z) \\ + \left(N^{-1/2} \sum_{j=1}^N U_j \right) f(X_t^N)dt$$

Control of moment of $\sup |X_t^N|^2$: if f, b bounded,

$$\mathbb{E}_{\mathcal{E}} \left[\sup_{s \leq t} |X_s^N|^2 \right] \leq C \left(t^2 + t \left(N^{-1} \sum_{j=1}^N U_j^2 \right) + t^2 \left(N^{-1/2} \sum_{j=1}^N U_j \right)^2 \right)$$

Main result : annealed convergence

Theorem

- X^N converges to \bar{X} in distribution in $D(\mathbb{R}_+, \mathbb{R})$

Main result : annealed convergence

Theorem

- X^N converges to \bar{X} in distribution in $D(\mathbb{R}_+, \mathbb{R})$
- For all $t > 0, g \in C_b^3(\mathbb{R})$,

$$\left| \mathbb{E} \left[g(X_t^N) \right] - \mathbb{E} \left[g(\bar{X}_t) \right] \right| \leq C_{g,t} \left(\frac{\ln N}{\sqrt{N}} + d_{KR}(\nu_0^N, \bar{\nu}_0) \right)$$

with $\nu_0^N := \mathcal{L}(X_0^N)$ and $\bar{\nu}_0 := \mathcal{L}(\bar{X}_0)$

Remarks :

- d_{KR} = Kantorovich-Rubinstein = 1st order Wasserstein

Main result : annealed convergence

Theorem

- X^N converges to \bar{X} in distribution in $D(\mathbb{R}_+, \mathbb{R})$
- For all $t > 0, g \in C_b^3(\mathbb{R})$,

$$\left| \mathbb{E} \left[g(X_t^N) \right] - \mathbb{E} \left[g(\bar{X}_t) \right] \right| \leq C_{g,t} \left(\frac{\ln N}{\sqrt{N}} + d_{KR}(\nu_0^N, \bar{\nu}_0) \right)$$

with $\nu_0^N := \mathcal{L}(X_0^N)$ and $\bar{\nu}_0 := \mathcal{L}(\bar{X}_0)$

Remarks :

- d_{KR} = Kantorovich-Rubinstein = 1st order Wasserstein
- same convergence speed for FIDI distribution

Assumptions and example

Assumptions :

- b, f, \sqrt{f} are C^4
- for $1 \leq k \leq 4$, $b^{(k)}, f^{(k)}, \sqrt{f}^{(k)}$ are bounded

Assumptions and example

Assumptions :

- b, f, \sqrt{f} are C^4
- for $1 \leq k \leq 4$, $b^{(k)}, f^{(k)}, \sqrt{f}^{(k)}$ are bounded

Example :

$$b(x) := -\alpha x \text{ and } f(x) := \frac{\theta}{1 + e^{-\lambda(x-x_0)}} \quad [\text{Velichko, Boriskov (2020)}]$$

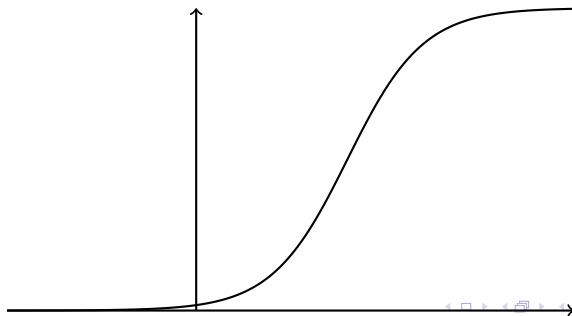
Assumptions and example

Assumptions :

- b, f, \sqrt{f} are C^4
- for $1 \leq k \leq 4$, $b^{(k)}, f^{(k)}, \sqrt{f}^{(k)}$ are bounded

Example :

$$b(x) := -\alpha x \text{ and } f(x) := \frac{\theta}{1 + e^{-\lambda(x-x_0)}} \quad [\text{Velichko, Boriskov (2020)}]$$



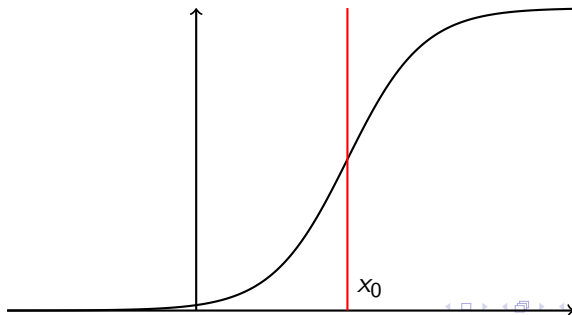
Assumptions and example

Assumptions :

- b, f, \sqrt{f} are C^4
- for $1 \leq k \leq 4$, $b^{(k)}, f^{(k)}, \sqrt{f}^{(k)}$ are bounded

Example :

$$b(x) := -\alpha x \text{ and } f(x) := \frac{\theta}{1 + e^{-\lambda(x-x_0)}} \text{ [Velichko, Boriskov (2020)]}$$



Infinitesimal generator

N -particle system

$$dX_t^N = b(X_t^N)dt + N^{-1/2} \sum_{j=1}^N U_j \int_0^\infty \mathbb{1}_{\{z \leq f(X_{t-}^N)\}} d\pi^j(t, z)$$

Limit system

$$d\bar{X}_t^N = b(\bar{X}_t^N)dt + W^{[N]}f(\bar{X}_t^N)dt + \sigma\sqrt{f(\bar{X}_t^N)}dB_t$$

Infinitesimal generator

N -particle system

$$dX_t^N = b(X_t^N)dt + N^{-1/2} \sum_{j=1}^N U_j \int_0^\infty \mathbb{1}_{\{z \leq f(X_{t-}^N)\}} d\pi^j(t, z)$$

$$A_{\mathcal{E}}^N g(x) = b(x)g'(x) + f(x) \sum_{j=1}^N \left[g\left(x + \frac{U_j}{\sqrt{N}}\right) - g(x) \right]$$

Limit system

$$d\bar{X}_t^N = b(\bar{X}_t^N)dt + W^{[N]}f(\bar{X}_t^N)dt + \sigma\sqrt{f(\bar{X}_t^N)}dB_t$$

$$\bar{A}_{\mathcal{E}}^N g(x) = b(x)g'(x) + W^{[N]}f(x)g'(x) + \frac{1}{2}\sigma^2 f(x)g''(x)$$

Infinitesimal generator

N -particle system

$$dX_t^N = b(X_t^N)dt + N^{-1/2} \sum_{j=1}^N U_j \int_0^\infty \mathbb{1}_{\{z \leq f(X_{t-}^N)\}} d\pi^j(t, z)$$

$$A_{\mathcal{E}}^N g(x) = b(x)g'(x) + f(x) \sum_{j=1}^N \left[g\left(x + \frac{U_j}{\sqrt{N}}\right) - g(x) \right]$$

Limit system

$$d\bar{X}_t^N = b(\bar{X}_t^N)dt + W^{[N]}f(\bar{X}_t^N)dt + \sigma\sqrt{f(\bar{X}_t^N)}dB_t$$

$$\bar{A}_{\mathcal{E}}^N g(x) = b(x)g'(x) + W^{[N]}f(x)g'(x) + \frac{1}{2}\sigma^2 f(x)g''(x)$$

Infinitesimal generator

N -particle system

$$dX_t^N = b(X_t^N)dt + N^{-1/2} \sum_{j=1}^N U_j \int_0^\infty \mathbb{1}_{\{z \leq f(X_{t-}^N)\}} d\pi^j(t, z)$$

$$\begin{aligned} A_{\mathcal{E}}^N g(x) &= b(x)g'(x) + f(x)g'(x) \left(\frac{1}{\sqrt{N}} \sum_{j=1}^N U_j \right) \\ &\quad + f(x)g''(x) \left(\frac{1}{2N} \sum_{j=1}^N U_j^2 \right) + o(N^{-1/2}) \end{aligned}$$

Limit system

$$d\bar{X}_t^N = b(\bar{X}_t^N)dt + W^{[N]}f(\bar{X}_t^N)dt + \sigma\sqrt{f(\bar{X}_t^N)}dB_t$$

$$\bar{A}_{\mathcal{E}}^N g(x) = b(x)g'(x) + W^{[N]}f(x)g'(x) + \frac{1}{2}\sigma^2 f(x)g''(x)$$

Infinitesimal generator

N -particle system

$$dX_t^N = b(X_t^N)dt + N^{-1/2} \sum_{j=1}^N U_j \int_0^\infty \mathbb{1}_{\{z \leq f(X_{t-}^N)\}} d\pi^j(t, z)$$

$$\begin{aligned} A_{\mathcal{E}}^N g(x) &= b(x)g'(x) + f(x)g'(x) \left(\frac{1}{\sqrt{N}} \sum_{j=1}^N U_j \right) \\ &\quad + f(x)g''(x) \left(\frac{1}{2N} \sum_{j=1}^N U_j^2 \right) + O(N^{-1/2}) \end{aligned}$$

Limit system

$$d\bar{X}_t^N = b(\bar{X}_t^N)dt + W^{[N]}f(\bar{X}_t^N)dt + \sigma\sqrt{f(\bar{X}_t^N)}dB_t$$

$$\bar{A}_{\mathcal{E}}^N g(x) = b(x)g'(x) + W^{[N]}f(x)g'(x) + \frac{1}{2}\sigma^2 f(x)g''(x)$$

Difference of generators

$$\begin{aligned}
 \left| A_{\mathcal{E}}^N g(x) - \bar{A}_{\mathcal{E}}^N g(x) \right| \leq f(x) & \left(\left| \frac{1}{\sqrt{N}} \sum_{j=1}^N U_j - W^{[M]} \right| \cdot |g'(x)| \right. \\
 & + \frac{1}{2} \left| \frac{1}{N} \sum_{j=1}^N U_j^2 - \sigma^2 \right| \cdot |g''(x)| \\
 & \left. + \frac{1}{6N\sqrt{N}} \sum_{j=1}^N |U_j|^3 \cdot \|g'''\|_{\infty} \right)
 \end{aligned}$$

Difference of generators

$$\begin{aligned}
 \left| A_{\mathcal{E}}^N g(x) - \bar{A}_{\mathcal{E}}^N g(x) \right| \leq f(x) & \left(\left| \frac{1}{\sqrt{N}} \sum_{j=1}^N U_j - W^{[M]} \right| \cdot |g'(x)| \right. \\
 & + \frac{1}{2} \left| \frac{1}{N} \sum_{j=1}^N U_j^2 - \sigma^2 \right| \cdot |g''(x)| \\
 & \left. + \frac{1}{6N\sqrt{N}} \sum_{j=1}^N |U_j|^3 \cdot \|g'''\|_{\infty} \right)
 \end{aligned}$$

Difference of generators

$$\begin{aligned}
 \left| A_{\mathcal{E}}^N g(x) - \bar{A}_{\mathcal{E}}^N g(x) \right| \leq f(x) \|g\|_{3,\infty} & \left(\left| \frac{1}{\sqrt{N}} \sum_{j=1}^N U_j - W^{[M]} \right| \right. \\
 & + \frac{1}{2} \left| \frac{1}{N} \sum_{j=1}^N U_j^2 - \sigma^2 \right| \\
 & \left. + \frac{1}{6N\sqrt{N}} \sum_{j=1}^N |U_j|^3 \right)
 \end{aligned}$$

Difference of generators

$$\begin{aligned}
 \left| A_{\mathcal{E}}^N g(x) - \bar{A}_{\mathcal{E}}^N g(x) \right| &\leq f(x) \|g\|_{3,\infty} \left(\left| \frac{1}{\sqrt{N}} \sum_{j=1}^N U_j - W^{[M]} \right| \right. \\
 &\quad \left. + \frac{1}{2} \left| \frac{1}{N} \sum_{j=1}^N U_j^2 - \sigma^2 \right| \right. \\
 &\quad \left. + \frac{1}{6N\sqrt{N}} \sum_{j=1}^N |U_j|^3 \right) \\
 &\leq \|f\|_{\infty} \|g\|_{3,\infty} \epsilon_N(\mathcal{E})
 \end{aligned}$$

Semigroup

$$\left(\bar{P}_{\mathcal{E},t}^N - P_{\mathcal{E},t}^N\right) g(x) = \int_0^t P_{\mathcal{E},t-s}^N \left(\bar{A}_{\mathcal{E}}^N - A_{\mathcal{E}}^N\right) \bar{P}_{\mathcal{E},s}^N g(x) ds$$

Semigroup

$$\left(\bar{P}_{\mathcal{E},t}^N - P_{\mathcal{E},t}^N\right) g(x) = \int_0^t P_{\mathcal{E},t-s}^N \left(\bar{A}_{\mathcal{E}}^N - A_{\mathcal{E}}^N\right) \bar{P}_{\mathcal{E},s}^N g(x) ds$$

Sketch of proof : $u(s) := P_{\mathcal{E},t-s}^N \bar{P}_{\mathcal{E},s}^N g(x)$

Semigroup

$$\left(\bar{P}_{\mathcal{E},t}^N - P_{\mathcal{E},t}^N\right) g(x) = \int_0^t P_{\mathcal{E},t-s}^N \left(\bar{A}_{\mathcal{E}}^N - A_{\mathcal{E}}^N\right) \bar{P}_{\mathcal{E},s}^N g(x) ds$$

Sketch of proof : $u(s) := P_{\mathcal{E},t-s}^N \bar{P}_{\mathcal{E},s}^N g(x)$

$$\left(\bar{P}_{\mathcal{E},t}^N - P_{\mathcal{E},t}^N\right) g(x) = u(t) - u(0)$$

Semigroup

$$\left(\bar{P}_{\mathcal{E},t}^N - P_{\mathcal{E},t}^N\right) g(x) = \int_0^t P_{\mathcal{E},t-s}^N \left(\bar{A}_{\mathcal{E}}^N - A_{\mathcal{E}}^N\right) \bar{P}_{\mathcal{E},s}^N g(x) ds$$

Sketch of proof : $u(s) := P_{\mathcal{E},t-s}^N \bar{P}_{\mathcal{E},s}^N g(x)$

$$\begin{aligned} \left(\bar{P}_{\mathcal{E},t}^N - P_{\mathcal{E},t}^N\right) g(x) &= u(t) - u(0) \\ &= \int_0^t u'(s) ds \end{aligned}$$

Semigroup

$$\left(\bar{P}_{\mathcal{E},t}^N - P_{\mathcal{E},t}^N\right) g(x) = \int_0^t P_{\mathcal{E},t-s}^N \left(\bar{A}_{\mathcal{E}}^N - A_{\mathcal{E}}^N\right) \bar{P}_{\mathcal{E},s}^N g(x) ds$$

Sketch of proof : $u(s) := P_{\mathcal{E},t-s}^N \bar{P}_{\mathcal{E},s}^N g(x)$

$$\begin{aligned} \left(\bar{P}_{\mathcal{E},t}^N - P_{\mathcal{E},t}^N\right) g(x) &= u(t) - u(0) \\ &= \int_0^t u'(s) ds \\ &= \int_0^t \left[-\frac{d}{du} \left(P_{\mathcal{E},u}^N \bar{P}_{\mathcal{E},s}^N g(x) \right) \Big|_{u=t-s} + \frac{d}{du} \left(P_{\mathcal{E},t-s}^N \bar{P}_{\mathcal{E},u}^N g(x) \right) \Big|_{u=s} \right] ds \end{aligned}$$

Semigroup

$$\left(\bar{P}_{\mathcal{E},t}^N - P_{\mathcal{E},t}^N\right) g(x) = \int_0^t P_{\mathcal{E},t-s}^N \left(\bar{A}_{\mathcal{E}}^N - A_{\mathcal{E}}^N\right) \bar{P}_{\mathcal{E},s}^N g(x) ds$$

Sketch of proof : $u(s) := P_{\mathcal{E},t-s}^N \bar{P}_{\mathcal{E},s}^N g(x)$

$$\begin{aligned} \left(\bar{P}_{\mathcal{E},t}^N - P_{\mathcal{E},t}^N\right) g(x) &= u(t) - u(0) \\ &= \int_0^t u'(s) ds \\ &= \int_0^t \left[-\frac{d}{du} \left(P_{\mathcal{E},u}^N \bar{P}_{\mathcal{E},s}^N g(x) \right) \Big|_{u=t-s} + \frac{d}{du} \left(P_{\mathcal{E},t-s}^N \bar{P}_{\mathcal{E},u}^N g(x) \right) \Big|_{u=s} \right] ds \\ &= \int_0^t \left[-P_{\mathcal{E},t-s}^N A_{\mathcal{E}}^N \bar{P}_{\mathcal{E},s}^N g(x) + P_{\mathcal{E},t-s}^N \bar{A}_{\mathcal{E}}^N \bar{P}_{\mathcal{E},s}^N g(x) \right] ds \end{aligned}$$

Semigroup convergence

$$\left| \left(\bar{P}_{\mathcal{E},t}^N - P_{\mathcal{E},t}^N \right) g(x) \right| \leq \int_0^t \left| P_{\mathcal{E},t-s}^N \left(\bar{A}_{\mathcal{E}}^N - A_{\mathcal{E}}^N \right) \bar{P}_{\mathcal{E},s}^N g(x) \right| ds$$

Semigroup convergence

$$\begin{aligned} \left| \left(\bar{P}_{\mathcal{E},t}^N - P_{\mathcal{E},t}^N \right) g(x) \right| &\leq \int_0^t \left| P_{\mathcal{E},t-s}^N \left(\bar{A}_{\mathcal{E}}^N - A_{\mathcal{E}}^N \right) \bar{P}_{\mathcal{E},s}^N g(x) \right| ds \\ &\leq \int_0^t \mathbb{E}_{\mathcal{E}, X_0^N = x} \left[\left| \left(\bar{A}_{\mathcal{E}}^N - A_{\mathcal{E}}^N \right) \bar{P}_{\mathcal{E},s}^N g(X_{t-s}^N) \right| \right] ds \end{aligned}$$

Semigroup convergence

$$\begin{aligned}
 \left| \left(\bar{P}_{\mathcal{E},t}^N - P_{\mathcal{E},t}^N \right) g(x) \right| &\leq \int_0^t \left| P_{\mathcal{E},t-s}^N \left(\bar{A}_{\mathcal{E}}^N - A_{\mathcal{E}}^N \right) \bar{P}_{\mathcal{E},s}^N g(x) \right| ds \\
 &\leq \int_0^t \mathbb{E}_{\mathcal{E}, X_0^N = x} \left[\left| \left(\bar{A}_{\mathcal{E}}^N - A_{\mathcal{E}}^N \right) \bar{P}_{\mathcal{E},s}^N g(X_{t-s}^N) \right| \right] ds \\
 &\leq \|f\|_{\infty} \left(\int_0^t \left\| \bar{P}_{\mathcal{E},s}^N g \right\|_{3,\infty} ds \right) \epsilon_N(\mathcal{E})
 \end{aligned}$$

Semigroup convergence

$$\begin{aligned}
 \left| \left(\bar{P}_{\mathcal{E},t}^N - P_{\mathcal{E},t}^N \right) g(x) \right| &\leq \int_0^t \left| P_{\mathcal{E},t-s}^N \left(\bar{A}_{\mathcal{E}}^N - A_{\mathcal{E}}^N \right) \bar{P}_{\mathcal{E},s}^N g(x) \right| ds \\
 &\leq \int_0^t \mathbb{E}_{\mathcal{E}, X_0^N = x} \left[\left| \left(\bar{A}_{\mathcal{E}}^N - A_{\mathcal{E}}^N \right) \bar{P}_{\mathcal{E},s}^N g(X_{t-s}^N) \right| \right] ds \\
 &\leq \|f\|_{\infty} \left(\int_0^t \left\| \bar{P}_{\mathcal{E},s}^N g \right\|_{3,\infty} ds \right) \epsilon_N(\mathcal{E})
 \end{aligned}$$

Control of $\left\| \bar{P}_{\mathcal{E},s}^N g(x) \right\|_{3,\infty}$

$$\bar{P}_{\mathcal{E},s}^N g(x) = \mathbb{E}_{\mathcal{E}, \bar{X}_0^N = x} \left[g(\bar{X}_s^N) \right]$$

Semigroup convergence

$$\begin{aligned}
 \left| \left(\bar{P}_{\mathcal{E},t}^N - P_{\mathcal{E},t}^N \right) g(x) \right| &\leq \int_0^t \left| P_{\mathcal{E},t-s}^N \left(\bar{A}_{\mathcal{E}}^N - A_{\mathcal{E}}^N \right) \bar{P}_{\mathcal{E},s}^N g(x) \right| ds \\
 &\leq \int_0^t \mathbb{E}_{\mathcal{E}, X_0^N = x} \left[\left| \left(\bar{A}_{\mathcal{E}}^N - A_{\mathcal{E}}^N \right) \bar{P}_{\mathcal{E},s}^N g(X_{t-s}^N) \right| \right] ds \\
 &\leq \|f\|_{\infty} \left(\int_0^t \left\| \bar{P}_{\mathcal{E},s}^N g \right\|_{3,\infty} ds \right) \epsilon_N(\mathcal{E})
 \end{aligned}$$

Control of $\left\| \bar{P}_{\mathcal{E},s}^N g(x) \right\|_{3,\infty}$

$$\bar{P}_{\mathcal{E},s}^N g(x) = \mathbb{E}_{\mathcal{E}, \bar{X}_0^N = x} \left[g(\bar{X}_s^N) \right] = \mathbb{E}_{\mathcal{E}} \left[g(\bar{X}_s^N(x)) \right]$$

Semigroup convergence

$$\begin{aligned}
 \left| \left(\bar{P}_{\mathcal{E},t}^N - P_{\mathcal{E},t}^N \right) g(x) \right| &\leq \int_0^t \left| P_{\mathcal{E},t-s}^N \left(\bar{A}_{\mathcal{E}}^N - A_{\mathcal{E}}^N \right) \bar{P}_{\mathcal{E},s}^N g(x) \right| ds \\
 &\leq \int_0^t \mathbb{E}_{\mathcal{E}, X_0^N = x} \left[\left| \left(\bar{A}_{\mathcal{E}}^N - A_{\mathcal{E}}^N \right) \bar{P}_{\mathcal{E},s}^N g(X_{t-s}^N) \right| \right] ds \\
 &\leq \|f\|_{\infty} \left(\int_0^t \left\| \bar{P}_{\mathcal{E},s}^N g \right\|_{3,\infty} ds \right) \epsilon_N(\mathcal{E})
 \end{aligned}$$

Control of $\left\| \bar{P}_{\mathcal{E},s}^N g(x) \right\|_{3,\infty}$

$$\begin{aligned}
 \bar{P}_{\mathcal{E},s}^N g(x) &= \mathbb{E}_{\mathcal{E}, \bar{X}_0^N = x} \left[g(\bar{X}_s^N) \right] = \mathbb{E}_{\mathcal{E}} \left[g(\bar{X}_s^N(x)) \right] \\
 \partial_x \bar{P}_{\mathcal{E},s}^N g(x) &= \mathbb{E}_{\mathcal{E}} \left[(\partial_x \bar{X}_s^N(x)) g'(\bar{X}_s^N(x)) \right]
 \end{aligned}$$

Semigroup convergence

$$\begin{aligned}
 \left| \left(\bar{P}_{\mathcal{E},t}^N - P_{\mathcal{E},t}^N \right) g(x) \right| &\leq \int_0^t \left| P_{\mathcal{E},t-s}^N \left(\bar{A}_{\mathcal{E}}^N - A_{\mathcal{E}}^N \right) \bar{P}_{\mathcal{E},s}^N g(x) \right| ds \\
 &\leq \int_0^t \mathbb{E}_{\mathcal{E}, X_0^N = x} \left[\left| \left(\bar{A}_{\mathcal{E}}^N - A_{\mathcal{E}}^N \right) \bar{P}_{\mathcal{E},s}^N g(X_{t-s}^N) \right| \right] ds \\
 &\leq \|f\|_{\infty} \left(\int_0^t \left\| \bar{P}_{\mathcal{E},s}^N g \right\|_{3,\infty} ds \right) \epsilon_N(\mathcal{E})
 \end{aligned}$$

Control of $\left\| \bar{P}_{\mathcal{E},s}^N g(x) \right\|_{3,\infty}$

$$\bar{P}_{\mathcal{E},s}^N g(x) = \mathbb{E}_{\mathcal{E}, \bar{X}_0^N = x} \left[g(\bar{X}_s^N) \right] = \mathbb{E}_{\mathcal{E}} \left[g(\bar{X}_s^N(x)) \right]$$

$$\partial_x \bar{P}_{\mathcal{E},s}^N g(x) = \mathbb{E}_{\mathcal{E}} \left[(\partial_x \bar{X}_s^N(x)) g'(\bar{X}_s^N(x)) \right]$$

$$|\partial_x \bar{P}_{\mathcal{E},s}^N g(x)| \leq \|g'\|_{\infty} \sup_x \mathbb{E}_{\mathcal{E}} \left[|\partial_x \bar{X}_s^N(x)| \right]$$

Semigroup convergence

$$\begin{aligned}
 \left| \left(\bar{P}_{\mathcal{E},t}^N - P_{\mathcal{E},t}^N \right) g(x) \right| &\leq \int_0^t \left| P_{\mathcal{E},t-s}^N \left(\bar{A}_{\mathcal{E}}^N - A_{\mathcal{E}}^N \right) \bar{P}_{\mathcal{E},s}^N g(x) \right| ds \\
 &\leq \int_0^t \mathbb{E}_{\mathcal{E}, X_0^N = x} \left[\left| \left(\bar{A}_{\mathcal{E}}^N - A_{\mathcal{E}}^N \right) \bar{P}_{\mathcal{E},s}^N g(X_{t-s}^N) \right| \right] ds \\
 &\leq \|f\|_{\infty} \left(\int_0^t \left\| \bar{P}_{\mathcal{E},s}^N g \right\|_{3,\infty} ds \right) \epsilon_N(\mathcal{E})
 \end{aligned}$$

Control of $\left\| \bar{P}_{\mathcal{E},s}^N g(x) \right\|_{3,\infty}$

$$\bar{P}_{\mathcal{E},s}^N g(x) = \mathbb{E}_{\mathcal{E}, \bar{X}_0^N = x} \left[g(\bar{X}_s^N) \right] = \mathbb{E}_{\mathcal{E}} \left[g(\bar{X}_s^N(x)) \right]$$

$$\partial_x \bar{P}_{\mathcal{E},s}^N g(x) = \mathbb{E}_{\mathcal{E}} \left[(\partial_x \bar{X}_s^N(x)) g'(\bar{X}_s^N(x)) \right]$$

$$|\partial_x \bar{P}_{\mathcal{E},s}^N g(x)| \leq \|g'\|_{\infty} \sup_x \mathbb{E}_{\mathcal{E}} \left[|\partial_x \bar{X}_s^N(x)| \right] \leq C_s \|g'\|_{\infty} e^{C_s |W^M|}$$

Semigroup convergence

$$\begin{aligned}
 \left| \left(\bar{P}_{\mathcal{E},t}^N - P_{\mathcal{E},t}^N \right) g(x) \right| &\leq \int_0^t \left| P_{\mathcal{E},t-s}^N \left(\bar{A}_{\mathcal{E}}^N - A_{\mathcal{E}}^N \right) \bar{P}_{\mathcal{E},s}^N g(x) \right| ds \\
 &\leq \int_0^t \mathbb{E}_{\mathcal{E}, X_0^N = x} \left[\left| \left(\bar{A}_{\mathcal{E}}^N - A_{\mathcal{E}}^N \right) \bar{P}_{\mathcal{E},s}^N g(X_{t-s}^N) \right| \right] ds \\
 &\leq \|f\|_{\infty} \left(\int_0^t \left\| \bar{P}_{\mathcal{E},s}^N g \right\|_{3,\infty} ds \right) \epsilon_N(\mathcal{E}) \\
 &\leq C_t e^{C_t |W^{[M]}|} \epsilon_N(\mathcal{E})
 \end{aligned}$$

Control of $\left\| \bar{P}_{\mathcal{E},s}^N g(x) \right\|_{3,\infty}$

$$\bar{P}_{\mathcal{E},s}^N g(x) = \mathbb{E}_{\mathcal{E}, \bar{X}_0^N = x} \left[g(\bar{X}_s^N) \right] = \mathbb{E}_{\mathcal{E}} \left[g(\bar{X}_s^N(x)) \right]$$

$$\partial_x \bar{P}_{\mathcal{E},s}^N g(x) = \mathbb{E}_{\mathcal{E}} \left[(\partial_x \bar{X}_s^N(x)) g'(\bar{X}_s^N(x)) \right]$$

$$|\partial_x \bar{P}_{\mathcal{E},s}^N g(x)| \leq \|g'\|_{\infty} \sup_x \mathbb{E}_{\mathcal{E}} \left[|\partial_x \bar{X}_s^N(x)| \right] \leq C_s \|g'\|_{\infty} e^{C_s |W^{[M]}|}$$

One-dimensional convergence

$$\left| \mathbb{E}_{\mathcal{E}} \left[g(X_t^N) \right] - \mathbb{E}_{\mathcal{E}} \left[g(\bar{X}_t^N) \right] \right|$$

One-dimensional convergence

$$\begin{aligned} & \left| \mathbb{E}_{\mathcal{E}} \left[g(X_t^N) \right] - \mathbb{E}_{\mathcal{E}} \left[g(\bar{X}_t^N) \right] \right| \\ &= \left| \int d\nu_0^N(x) P_{\mathcal{E},t}^N g(x) - \int d\bar{\nu}_0(x) \bar{P}_{\mathcal{E},t}^N g(x) \right| \end{aligned}$$

One-dimensional convergence

$$\begin{aligned}
 & \left| \mathbb{E}_{\mathcal{E}} \left[g(X_t^N) \right] - \mathbb{E}_{\mathcal{E}} \left[g(\bar{X}_t^N) \right] \right| \\
 &= \left| \int d\nu_0^N(x) P_{\mathcal{E},t}^N g(x) - \int d\bar{\nu}_0(x) \bar{P}_{\mathcal{E},t}^N g(x) \right| \\
 &\leq \int d\nu_0^N(x) \left| \left(P_{\mathcal{E},t}^N - \bar{P}_{\mathcal{E},t}^N \right) g(x) \right| + \left| \int d(\nu_0^N - \bar{\nu}_0)(x) \bar{P}_{\mathcal{E},t}^N g(x) \right|
 \end{aligned}$$

One-dimensional convergence

$$\begin{aligned}
 & \left| \mathbb{E}_{\mathcal{E}} \left[g(X_t^N) \right] - \mathbb{E}_{\mathcal{E}} \left[g(\bar{X}_t^N) \right] \right| \\
 &= \left| \int d\nu_0^N(x) P_{\mathcal{E},t}^N g(x) - \int d\bar{\nu}_0(x) \bar{P}_{\mathcal{E},t}^N g(x) \right| \\
 &\leq \int d\nu_0^N(x) \left| \left(P_{\mathcal{E},t}^N - \bar{P}_{\mathcal{E},t}^N \right) g(x) \right| + \left| \int d(\nu_0^N - \bar{\nu}_0)(x) \bar{P}_{\mathcal{E},t}^N g(x) \right| \\
 &\leq C_t e^{C_t |W^{[M]}|} \epsilon_N(\mathcal{E}) + \|(\bar{P}_{\mathcal{E},t}^N g)'\|_{\infty} d_{KR}(\nu_0^N, \bar{\nu}_0)
 \end{aligned}$$

One-dimensional convergence

$$\begin{aligned}
 & \left| \mathbb{E}_{\mathcal{E}} \left[g(X_t^N) \right] - \mathbb{E}_{\mathcal{E}} \left[g(\bar{X}_t^N) \right] \right| \\
 &= \left| \int d\nu_0^N(x) P_{\mathcal{E},t}^N g(x) - \int d\bar{\nu}_0(x) \bar{P}_{\mathcal{E},t}^N g(x) \right| \\
 &\leq \int d\nu_0^N(x) \left| \left(P_{\mathcal{E},t}^N - \bar{P}_{\mathcal{E},t}^N \right) g(x) \right| + \left| \int d(\nu_0^N - \bar{\nu}_0)(x) \bar{P}_{\mathcal{E},t}^N g(x) \right| \\
 &\leq C_t e^{C_t |W^{[M]}|} \epsilon_N(\mathcal{E}) + \|(\bar{P}_{\mathcal{E},t}^N g)'\|_{\infty} d_{KR}(\nu_0^N, \bar{\nu}_0) \\
 &\leq C_t e^{C_t |W^{[M]}|} \left(\epsilon_N(\mathcal{E}) + d_{KR}(\nu_0^N, \bar{\nu}_0) \right)
 \end{aligned}$$

One-dimensional convergence

$$\begin{aligned}
& \left| \mathbb{E}_{\mathcal{E}} \left[g(X_t^N) \right] - \mathbb{E}_{\mathcal{E}} \left[g(\bar{X}_t^N) \right] \right| \\
&= \left| \int d\nu_0^N(x) P_{\mathcal{E},t}^N g(x) - \int d\bar{\nu}_0(x) \bar{P}_{\mathcal{E},t}^N g(x) \right| \\
&\leq \int d\nu_0^N(x) \left| \left(P_{\mathcal{E},t}^N - \bar{P}_{\mathcal{E},t}^N \right) g(x) \right| + \left| \int d(\nu_0^N - \bar{\nu}_0)(x) \bar{P}_{\mathcal{E},t}^N g(x) \right| \\
&\leq C_t e^{C_t |W^{[M]}|} \epsilon_N(\mathcal{E}) + \|(\bar{P}_{\mathcal{E},t}^N g)'\|_{\infty} d_{KR}(\nu_0^N, \bar{\nu}_0) \\
&\leq C_t e^{C_t |W^{[M]}|} \left(\epsilon_N(\mathcal{E}) + d_{KR}(\nu_0^N, \bar{\nu}_0) \right)
\end{aligned}$$

$$\mathbb{E} \left[\left| \mathbb{E}_{\mathcal{E}} \left[g(X_t^N) \right] - \mathbb{E}_{\mathcal{E}} \left[g(\bar{X}_t^N) \right] \right| \right] \leq C_t \left(\mathbb{E} \left[\epsilon_N(\mathcal{E})^2 \right]^{1/2} + d_{KR}(\nu_0^N, \bar{\nu}_0) \right)$$

One-dimensional convergence

$$\begin{aligned}
 & \left| \mathbb{E}_{\mathcal{E}} \left[g(X_t^N) \right] - \mathbb{E}_{\mathcal{E}} \left[g(\bar{X}_t^N) \right] \right| \\
 &= \left| \int d\nu_0^N(x) P_{\mathcal{E},t}^N g(x) - \int d\bar{\nu}_0(x) \bar{P}_{\mathcal{E},t}^N g(x) \right| \\
 &\leq \int d\nu_0^N(x) \left| \left(P_{\mathcal{E},t}^N - \bar{P}_{\mathcal{E},t}^N \right) g(x) \right| + \left| \int d(\nu_0^N - \bar{\nu}_0)(x) \bar{P}_{\mathcal{E},t}^N g(x) \right| \\
 &\leq C_t e^{C_t |W^{[M]}|} \epsilon_N(\mathcal{E}) + \|(\bar{P}_{\mathcal{E},t}^N g)'\|_{\infty} d_{KR}(\nu_0^N, \bar{\nu}_0) \\
 &\leq C_t e^{C_t |W^{[M]}|} \left(\epsilon_N(\mathcal{E}) + d_{KR}(\nu_0^N, \bar{\nu}_0) \right)
 \end{aligned}$$

$$\mathbb{E} \left[\left| \mathbb{E}_{\mathcal{E}} \left[g(X_t^N) \right] - \mathbb{E}_{\mathcal{E}} \left[g(\bar{X}_t^N) \right] \right| \right] \leq C_t \left(\mathbb{E} \left[\epsilon_N(\mathcal{E})^2 \right]^{1/2} + d_{KR}(\nu_0^N, \bar{\nu}_0) \right)$$

with $\epsilon_N(\mathcal{E}) \leq C \left(\left| \frac{1}{\sqrt{N}} \sum_{j=1}^N U_j - W^{[M]} \right| + \left| \frac{1}{N} \sum_{j=1}^N U_j^2 - \sigma^2 \right| + N^{-3/2} \sum_{j=1}^N |U_j|^3 \right)$

One-dimensional convergence

$$\begin{aligned}
 & \left| \mathbb{E}_{\mathcal{E}} \left[g(X_t^N) \right] - \mathbb{E}_{\mathcal{E}} \left[g(\bar{X}_t^N) \right] \right| \\
 &= \left| \int d\nu_0^N(x) P_{\mathcal{E},t}^N g(x) - \int d\bar{\nu}_0(x) \bar{P}_{\mathcal{E},t}^N g(x) \right| \\
 &\leq \int d\nu_0^N(x) \left| \left(P_{\mathcal{E},t}^N - \bar{P}_{\mathcal{E},t}^N \right) g(x) \right| + \left| \int d(\nu_0^N - \bar{\nu}_0)(x) \bar{P}_{\mathcal{E},t}^N g(x) \right| \\
 &\leq C_t e^{C_t |W^{[M]}|} \epsilon_N(\mathcal{E}) + \|(\bar{P}_{\mathcal{E},t}^N g)'\|_{\infty} d_{KR}(\nu_0^N, \bar{\nu}_0) \\
 &\leq C_t e^{C_t |W^{[M]}|} \left(\epsilon_N(\mathcal{E}) + d_{KR}(\nu_0^N, \bar{\nu}_0) \right)
 \end{aligned}$$

$$\mathbb{E} \left[\left| \mathbb{E}_{\mathcal{E}} \left[g(X_t^N) \right] - \mathbb{E}_{\mathcal{E}} \left[g(\bar{X}_t^N) \right] \right| \right] \leq C_t \left(\mathbb{E} \left[\epsilon_N(\mathcal{E})^2 \right]^{1/2} + d_{KR}(\nu_0^N, \bar{\nu}_0) \right)$$

with $\epsilon_N(\mathcal{E}) \leq C \left(\left| \frac{1}{\sqrt{N}} \sum_{j=1}^N U_j - W^{[M]} \right| + \left| \frac{1}{N} \sum_{j=1}^N U_j^2 - \sigma^2 \right| + N^{-3/2} \sum_{j=1}^N |U_j|^3 \right)$

One-dimensional convergence

$$\begin{aligned}
 & \left| \mathbb{E}_{\mathcal{E}} \left[g(X_t^N) \right] - \mathbb{E}_{\mathcal{E}} \left[g(\bar{X}_t^N) \right] \right| \\
 &= \left| \int d\nu_0^N(x) P_{\mathcal{E},t}^N g(x) - \int d\bar{\nu}_0(x) \bar{P}_{\mathcal{E},t}^N g(x) \right| \\
 &\leq \int d\nu_0^N(x) \left| (P_{\mathcal{E},t}^N - \bar{P}_{\mathcal{E},t}^N) g(x) \right| + \left| \int d(\nu_0^N - \bar{\nu}_0)(x) \bar{P}_{\mathcal{E},t}^N g(x) \right| \\
 &\leq C_t e^{C_t |W^{[M]}|} \epsilon_N(\mathcal{E}) + \|(\bar{P}_{\mathcal{E},t}^N g)'\|_{\infty} d_{KR}(\nu_0^N, \bar{\nu}_0) \\
 &\leq C_t e^{C_t |W^{[M]}|} \left(\epsilon_N(\mathcal{E}) + d_{KR}(\nu_0^N, \bar{\nu}_0) \right)
 \end{aligned}$$

$$\mathbb{E} \left[\left| \mathbb{E}_{\mathcal{E}} \left[g(X_t^N) \right] - \mathbb{E}_{\mathcal{E}} \left[g(\bar{X}_t^N) \right] \right| \right] \leq C_t \left(\mathbb{E} \left[\epsilon_N(\mathcal{E})^2 \right]^{1/2} + d_{KR}(\nu_0^N, \bar{\nu}_0) \right)$$

with $\epsilon_N(\mathcal{E}) \leq C \left(K \frac{\ln N}{\sqrt{N}} + \left| \frac{1}{N} \sum_{j=1}^N U_j^2 - \sigma^2 \right| + N^{-3/2} \sum_{j=1}^N |U_j|^3 \right)$

One-dimensional convergence

$$\begin{aligned}
 & \left| \mathbb{E}_{\mathcal{E}} \left[g(X_t^N) \right] - \mathbb{E}_{\mathcal{E}} \left[g(\bar{X}_t^N) \right] \right| \\
 &= \left| \int d\nu_0^N(x) P_{\mathcal{E},t}^N g(x) - \int d\bar{\nu}_0(x) \bar{P}_{\mathcal{E},t}^N g(x) \right| \\
 &\leq \int d\nu_0^N(x) \left| \left(P_{\mathcal{E},t}^N - \bar{P}_{\mathcal{E},t}^N \right) g(x) \right| + \left| \int d(\nu_0^N - \bar{\nu}_0)(x) \bar{P}_{\mathcal{E},t}^N g(x) \right| \\
 &\leq C_t e^{C_t |W^{[M]}|} \epsilon_N(\mathcal{E}) + \|(\bar{P}_{\mathcal{E},t}^N g)'\|_{\infty} d_{KR}(\nu_0^N, \bar{\nu}_0) \\
 &\leq C_t e^{C_t |W^{[M]}|} \left(\epsilon_N(\mathcal{E}) + d_{KR}(\nu_0^N, \bar{\nu}_0) \right)
 \end{aligned}$$

$$\mathbb{E} \left[\left| \mathbb{E}_{\mathcal{E}} \left[g(X_t^N) \right] - \mathbb{E}_{\mathcal{E}} \left[g(\bar{X}_t^N) \right] \right| \right] \leq C_t \left(\mathbb{E} \left[\epsilon_N(\mathcal{E})^2 \right]^{1/2} + d_{KR}(\nu_0^N, \bar{\nu}_0) \right)$$

with $\epsilon_N(\mathcal{E}) \leq C \left(K \frac{\ln N}{\sqrt{N}} + \left| \frac{1}{N} \sum_{j=1}^N U_j^2 - \sigma^2 \right| + N^{-3/2} \sum_{j=1}^N |U_j|^3 \right)$

One-dimensional convergence

$$\begin{aligned}
 & \left| \mathbb{E}_{\mathcal{E}} \left[g(X_t^N) \right] - \mathbb{E}_{\mathcal{E}} \left[g(\bar{X}_t^N) \right] \right| \\
 &= \left| \int d\nu_0^N(x) P_{\mathcal{E},t}^N g(x) - \int d\bar{\nu}_0(x) \bar{P}_{\mathcal{E},t}^N g(x) \right| \\
 &\leq \int d\nu_0^N(x) \left| \left(P_{\mathcal{E},t}^N - \bar{P}_{\mathcal{E},t}^N \right) g(x) \right| + \left| \int d(\nu_0^N - \bar{\nu}_0)(x) \bar{P}_{\mathcal{E},t}^N g(x) \right| \\
 &\leq C_t e^{C_t |W^{[M]}|} \epsilon_N(\mathcal{E}) + \|(\bar{P}_{\mathcal{E},t}^N g)'\|_{\infty} d_{KR}(\nu_0^N, \bar{\nu}_0) \\
 &\leq C_t e^{C_t |W^{[M]}|} \left(\epsilon_N(\mathcal{E}) + d_{KR}(\nu_0^N, \bar{\nu}_0) \right)
 \end{aligned}$$

$$\mathbb{E} \left[\left| \mathbb{E}_{\mathcal{E}} \left[g(X_t^N) \right] - \mathbb{E}_{\mathcal{E}} \left[g(\bar{X}_t^N) \right] \right| \right] \leq C_t \left(\ln N / \sqrt{N} + d_{KR}(\nu_0^N, \bar{\nu}_0) \right)$$

with $\epsilon_N(\mathcal{E}) \leq C \left(K \frac{\ln N}{\sqrt{N}} + \left| \frac{1}{N} \sum_{j=1}^N U_j^2 - \sigma^2 \right| + N^{-3/2} \sum_{j=1}^N |U_j|^3 \right)$

Tightness

Tightness criterion

Tightness

Tightness criterion [Billingsley (1999)] : for all $0 < r < s < t < T$,

$$\mathbb{E} \left[(X_t^N - X_s^N)^2 (X_s^N - X_r^N)^2 \right] \leq C_T (t - r)^{3/2}$$

Tightness

Tightness criterion [Billingsley (1999)] : for all $0 < r < s < t < T$,

$$\mathbb{E} \left[(X_t^N - X_s^N)^2 (X_s^N - X_r^N)^2 \right] \leq C_T (t - r)^{3/2}$$

$$\begin{aligned} X_t^N - X_s^N &= \int_s^t b(X_u^N) du + \frac{1}{\sqrt{N}} \sum_{j=1}^N U_j \int_s^t f(X_u^N) du \\ &\quad + \frac{1}{\sqrt{N}} \sum_{j=1}^N U_j \int_s^t \int_0^\infty \mathbb{1}_{\{z \leq f(X_{u-}^N)\}} d\tilde{\pi}^j(u, z) \end{aligned}$$

Tightness

Tightness criterion [Billingsley (1999)] : for all $0 < r < s < t < T$,

$$\mathbb{E} \left[(X_t^N - X_s^N)^2 (X_s^N - X_r^N)^2 \right] \leq C_T (t - r)^{3/2}$$

$$\begin{aligned} X_t^N - X_s^N &= \int_s^t b(X_u^N) du + \frac{1}{\sqrt{N}} \sum_{j=1}^N U_j \int_s^t f(X_u^N) du \\ &\quad + \frac{1}{\sqrt{N}} \sum_{j=1}^N U_j \int_s^t \int_0^\infty \mathbb{1}_{\{z \leq f(X_{u-}^N)\}} d\tilde{\pi}^j(u, z) \end{aligned}$$

$$\mathbb{E}_{\mathcal{E}} \left[(X_t^N - X_s^N)^2 (X_s^N - X_r^N)^2 \right] \leq \dots$$

Tightness

Tightness criterion [Billingsley (1999)] : for all $0 < r < s < t < T$,

$$\mathbb{E} \left[(X_t^N - X_s^N)^2 (X_s^N - X_r^N)^2 \right] \leq C_T (t - r)^{3/2}$$

$$\begin{aligned} X_t^N - X_s^N &= \int_s^t b(X_u^N) du + \frac{1}{\sqrt{N}} \sum_{j=1}^N U_j \int_s^t f(X_u^N) du \\ &\quad + \frac{1}{\sqrt{N}} \sum_{j=1}^N U_j \int_s^t \int_0^\infty \mathbb{1}_{\{z \leq f(X_{u-}^N)\}} d\tilde{\pi}^j(u, z) \end{aligned}$$

$$\mathbb{E}_{\mathcal{E}} \left[(X_t^N - X_s^N)^2 (X_s^N - X_r^N)^2 \right] \leq \dots$$

$$\mathbb{E} \left[(X_t^N - X_s^N)^2 (X_s^N - X_r^N)^2 \right] \leq C_T (t - r)^{3/2}$$

Model in dimension N

Random environment iid U_{ji} =synaptic strength $j \rightarrow i$

$$dX_t^{N,i} = b(X_t^{N,i})dt + N^{-1/2} \sum_{j=1}^N U_{ji} \int_0^\infty \mathbb{1}_{\{z \leq f(X_{t-}^{N,j})\}} d\pi^j(t, z)$$

Model in dimension N

Random environment iid U_{ji} =synaptic strength $j \rightarrow i$

$$dX_t^{N,i} = b(X_t^{N,i})dt + N^{-1/2} \sum_{j=1}^N U_{ji} \int_0^\infty \mathbb{1}_{\{z \leq f(X_{t-}^{N,j})\}} d\tilde{\pi}^j(t, z) \\ + \frac{1}{\sqrt{N}} \sum_{j=1}^N U_{ji} f(X_t^{N,j})dt$$

Model in dimension N

Random environment iid U_{ji} =synaptic strength $j \rightarrow i$

$$dX_t^{N,i} = b(X_t^{N,i})dt + N^{-1/2} \sum_{j=1}^N U_{ji} \int_0^\infty \mathbb{1}_{\{z \leq f(X_{t-}^{N,j})\}} d\tilde{\pi}^j(t, z) \\ + \frac{1}{\sqrt{N}} \sum_{j=1}^N U_{ji} f(X_t^{N,j})dt$$

Random environment iid $W_i \sim \mathcal{N}(0, 1)$

$$d\bar{X}_t^i = b(\bar{X}_t^i)dt + \sqrt{\mathbb{E} [U_{1i}^2 f(\bar{X}_t^1) | \sigma(B)]} dB_t \\ + \sqrt{\mathbb{E} [U_{1i}^2 f(\bar{X}_t^1) | \sigma(B)]} W_i dt$$

Model in dimension N

Random environment iid U_{ji} =synaptic strength $j \rightarrow i$

$$dX_t^{N,i} = b(X_t^{N,i})dt + N^{-1/2} \sum_{j=1}^N U_{ji} \int_0^\infty \mathbb{1}_{\{z \leq f(X_{t-}^{N,j})\}} d\tilde{\pi}^j(t, z) \\ + \frac{1}{\sqrt{N}} \sum_{j=1}^N U_{ji} f(X_t^{N,j})dt$$

Random environment iid $W_i \sim \mathcal{N}(0, 1)$

$$d\bar{X}_t^i = b(\bar{X}_t^i)dt + \sqrt{\mathbb{E} [U_{1i}^2 f(\bar{X}_t^1) | \sigma(B)]} dB_t \\ + \sqrt{\mathbb{E} [U_{1i}^2 f(\bar{X}_t^1) | \sigma(B)]} W_i dt$$

Problem : not explicit, not (conditional) McKean-Vlasov

Model in dimension N with $f \equiv \|f\|_\infty$

Random environment iid U_{ji} =synaptic strength $j \rightarrow i$

$$d\tilde{X}_t^{N,i} = b(\tilde{X}_t^{N,i})dt + N^{-1/2} \sum_{j=1}^N U_{ji} \int_0^\infty \mathbb{1}_{\{z \leq \|f\|_\infty\}} d\tilde{\pi}^j(t, z) \\ + \frac{1}{\sqrt{N}} \sum_{j=1}^N U_{ji} \|f\|_\infty dt$$

Model in dimension N with $f \equiv \|f\|_\infty$

Random environment iid U_{ji} =synaptic strength $j \rightarrow i$

$$d\tilde{X}_t^{N,i} = b(\tilde{X}_t^{N,i})dt + N^{-1/2} \sum_{j=1}^N U_{ji} \int_0^\infty \mathbb{1}_{\{z \leq \|f\|_\infty\}} d\tilde{\pi}^j(t, z) \\ + \frac{1}{\sqrt{N}} \sum_{j=1}^N U_{ji} \|f\|_\infty dt$$

Random environment iid $W_i \sim \mathcal{N}(0, 1)$

$$d\tilde{X}_t^i = b(\tilde{X}_t^i)dt + \sqrt{\|f\|_\infty} \sqrt{\mathbb{E}[U_{1i}^2 | \sigma(B)]} dB_t \\ + \sqrt{\|f\|_\infty} \sqrt{\mathbb{E}[U_{1i}^2 | \sigma(B)]} W_i dt$$

Model in dimension N with $f \equiv \|f\|_\infty$

Random environment iid U_{ji} =synaptic strength $j \rightarrow i$

$$d\tilde{X}_t^{N,i} = b(\tilde{X}_t^{N,i})dt + N^{-1/2} \sum_{j=1}^N U_{ji} \int_0^\infty \mathbb{1}_{\{z \leq \|f\|_\infty\}} d\tilde{\pi}^j(t, z) \\ + \frac{1}{\sqrt{N}} \sum_{j=1}^N U_{ji} \|f\|_\infty dt$$

Random environment iid $W_i \sim \mathcal{N}(0, 1)$

$$d\tilde{X}_t^i = b(\tilde{X}_t^i)dt + \sqrt{\|f\|_\infty} \sqrt{\mathbb{E}[U_{1i}^2 | \sigma(B)]} dB_t \\ + \sqrt{\|f\|_\infty} \sqrt{\mathbb{E}[U_{1i}^2 | \sigma(B)]} W_i dt$$

Model in dimension N with $f \equiv \|f\|_\infty$

Random environment iid U_{ji} =synaptic strength $j \rightarrow i$

$$d\tilde{X}_t^{N,i} = b(\tilde{X}_t^{N,i})dt + N^{-1/2} \sum_{j=1}^N U_{ji} \int_0^\infty \mathbb{1}_{\{z \leq \|f\|_\infty\}} d\tilde{\pi}^j(t, z) \\ + \frac{1}{\sqrt{N}} \sum_{j=1}^N U_{ji} \|f\|_\infty dt$$

Random environment iid $W_i \sim \mathcal{N}(0, 1)$

$$d\tilde{X}_t^i = b(\tilde{X}_t^i)dt + \sqrt{\|f\|_\infty} \sigma dB_t \\ + \sqrt{\|f\|_\infty} \sigma W_i dt$$

Model in dimension N with $f \equiv \|f\|_\infty$

Random environment iid U_{ji} =synaptic strength $j \rightarrow i$

$$d\tilde{X}_t^{N,i} = b(\tilde{X}_t^{N,i})dt + N^{-1/2} \sum_{j=1}^N U_{ji} \int_0^\infty \mathbb{1}_{\{z \leq \|f\|_\infty\}} d\tilde{\pi}^j(t, z) \\ + \frac{1}{\sqrt{N}} \sum_{j=1}^N U_{ji} \|f\|_\infty dt$$

Random environment iid $W_i \sim \mathcal{N}(0, 1)$

$$d\tilde{X}_t^i = b(\tilde{X}_t^i)dt + \sqrt{\|f\|_\infty} \sigma dB_t \\ + \sqrt{\|f\|_\infty} \sigma W_i dt$$

Girsanov's theorem gives $\mathcal{L}((X^{N,i})_{1 \leq i \leq N}) / \mathcal{L}((\tilde{X}^{N,i})_{1 \leq i \leq N})$

Bibliography (1)

- [E. \(2021\)](#) Annealed limit for a diffusive disordered mean-field model with random jumps. HAL, ArXiv.
- [Delattre, Fournier, Hoffman \(2016\)](#). Hawkes processes on large networks. Ann. Appl. Probab.
- [Chevallier, Duarte, Löcherbach, Ost \(2019\)](#). Mean field limits for nonlinear spatially extended Hawkes processes with exponential memory kernels. Stoch. Proc. Appl.
- [Agathe-Nerine \(2022\)](#). Multivariate Hawkes processes on inhomogeneous random graphs. Stoch. Proc. Appl.
- [Pfaffelhuber, Rotter, Stiefel \(2022\)](#) Mean-field limits for non-linear Hawkes processes with excitation and inhibition. Stoch. Proc. Appl.
- [Komlós, Major, Tusnády \(1976\)](#). An approximation of partial sums of independent RV's, and the sample DF. II. Zeitschrift für Wahrscheinlichkeitstheorie und Verwandte Gebiete.

Bibliography (2)

- [Barral, D Reyes \(2016\)](#). Synaptic scaling rule preserves excitatory-inhibitory balance and salient neuronal network dynamics. Nature neuroscience.
- [Shu, Hasenstaub, McCormick \(2003\)](#). Turning on and off recurrent balanced cortical activity. Nature.
- [Haider, Duque, Hasenstaub, McCormick \(2006\)](#). Neocortical network activity in vivo is generated through a dynamic balance of excitation and inhibition. Journal of neuroscience.
- [Velichko, Boriskov \(2020\)](#). Oscillator circuit for spike neural network with sigmoid like activation function and firing rate coding. IEEE.

Thank you for your attention !

Questions ?